

## Venus Attendant Propelled Wheelchair

Product Code: VNW05AA-FX

Peak Care Equipment  
149 Princes Highway  
Unanderra NSW 2526  
Tel: +612 4272 2688  
[www.peak-care.com.au](http://www.peak-care.com.au)

Distributor:



**User Manual**

# Thank You!

Thank you for purchasing the Venus Wheelchair.  
The Walking aid is suitable for a single user with limited mobility.  
The Venus Wheelchairs are ideal for indoor and outdoor use.

Kindly take time to go through this manual which gives you details about your Wheelchair. Kindly keep this booklet handy and use it as and when required.

Venus Wheelchair are warranted to be free of defects in material and workmanship for twelve months from the date of purchase. This device was built to exacting standards and carefully inspected prior to packing and shipping. This warranty is an expression of our confidence in the materials, our workmanship and an assurance of the same to our customers.

In the event of a defect covered by this warranty, we will at our option supply parts or replace the unit. This warranty does not cover device failure due to owner's misuse or negligence or normal wear and tear. This warranty does not extend to nondurable components such as rubber accessories, castors and grips, which are subject to normal wear and need periodic replacement.

If you have any queries, please contact the distributor

Please read this User Manual carefully before using the Venus Wheelchair.



Staple receipt here:



Venus parts details



Seat width	Seat depth	Seat height	Back height	Armrest height	Folded width	Footplate height	Overall Width	Overall length	Overall height	Weight	Weight capacity
46cm	40cm	51cm	42cm	15-25cm	30cm	43-48cm	63.5cm	100cm	96.5cm	12.5kg	100kg

Venus Features :

1. Attendant / Locking brake included.
2. Six levels height adjustable armrest.
3. Three levels height adjustable footplate.
4. Swing-away and detachable legrest.
5. 8"TPR front wheel and 12"TPR rear wheel.
6. EN 1021-1&2 flame retardant upholstery passed.
7. ISO 7176-8 wheelchair road testing passed.



Manual guide :



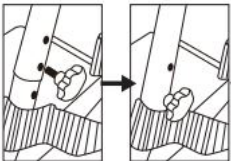
4. How to use the locking brake?

- a. Push the brake lever forward until it locks by itself.
- b. Pull the brake lever backward to release the locking brake.

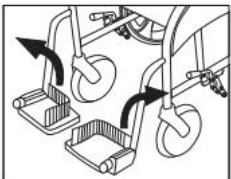


5. How to adjust the height of footplate?

- a. Unscrew the black nut to adjust the height of footplate.



- b. Adjust the footplate to the suitable height then screw back the black nut.

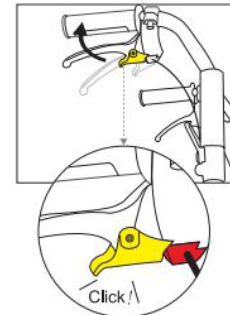


- c. Make sure the footplate must be folded back before folding the wheelchair.



6. How to cross obstacles by using curb climber?

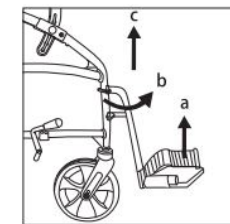
- a. Press down the curb climber with your foot.
- b. Balance can be maintained with the pushing handles.



1. How to use the attendant brake ?

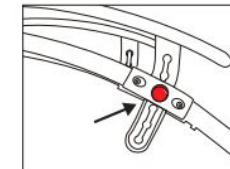
- a. To switch to the parking mode, please pull the brake lever upward, make sure you hear the "click" sound from the locking device which means the locking device is embedded in the dent.
- b. To cancel the parking mode, please pull the end edge of locking device.

**⚠ For your safety, please apply the parking mode on the flat floor.**



2. How to detach the legrest ?

- a. Fold back the footplate.
- b. Unlock the locking device and swing-away the legrest.
- c. Pull up the legrest.



3. How to adjust the height of armrest ?

- a. Press and hold the round bottom of the adjustment device.
- b. Adjust to the suitable height position of armrest then release the round bottom.



- c. The armrest can switch to Desk mode while adjusting it to the lowest position.



- d. The armrest can switch to Long mode while adjusting it to the highest position.